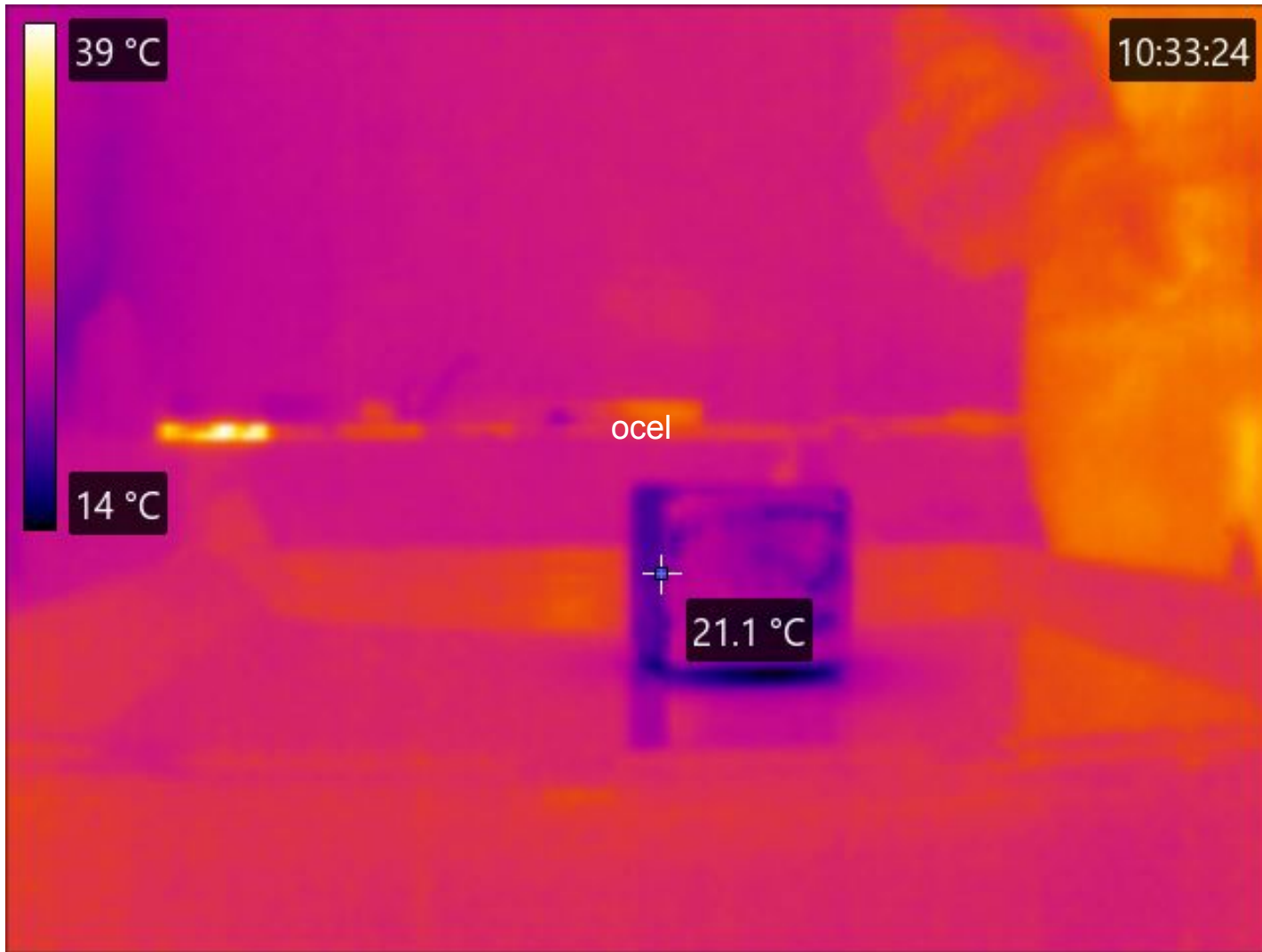


Přenos tepla vedením

Ester, Amélie, Jolča, Šimon, Filip, Vojta



134 °C

10:45:26

23 °C



Avg = 25.1 °C
Min = 24.4 °C
Max = 25.8 °C

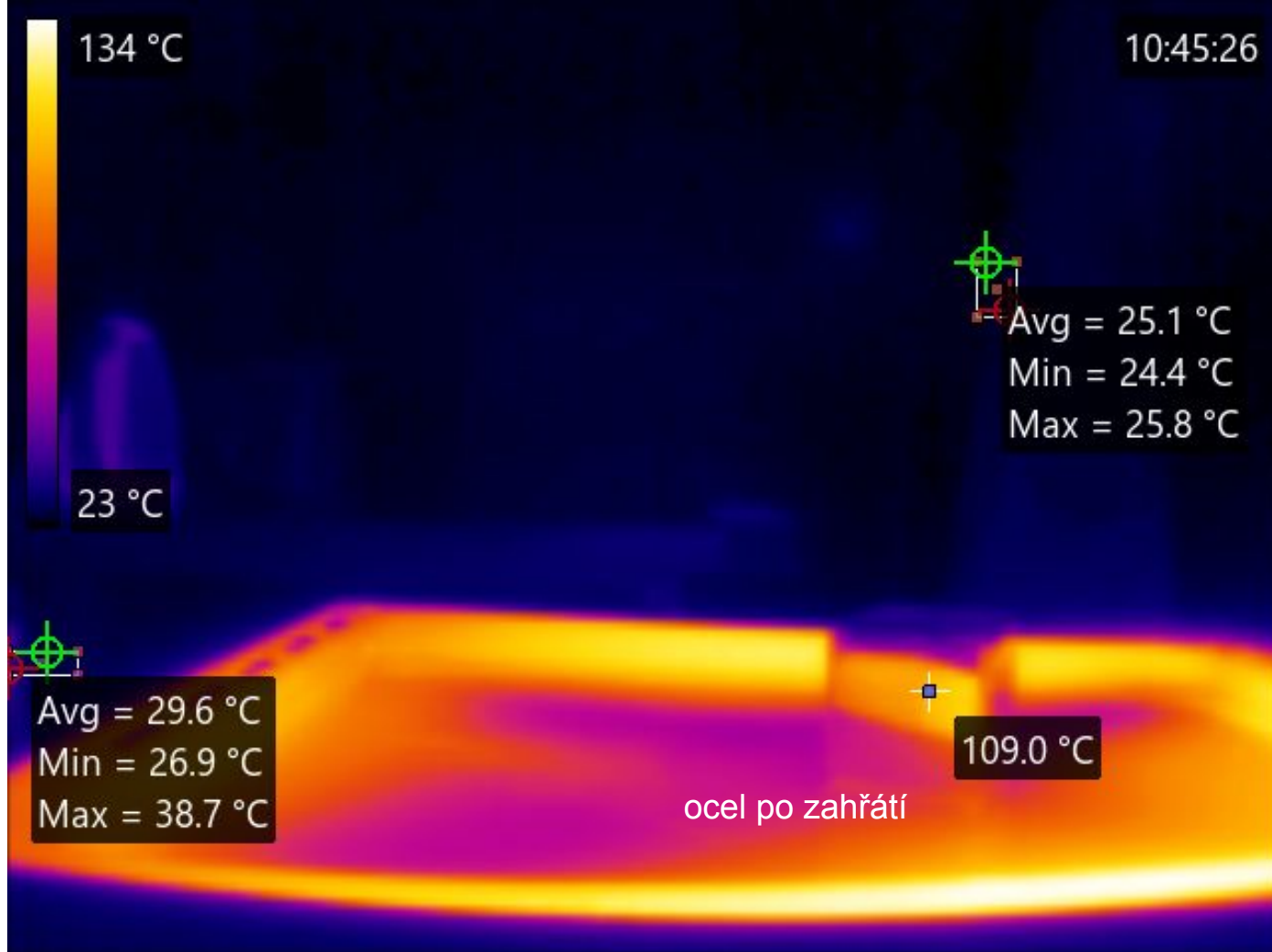


Avg = 29.6 °C
Min = 26.9 °C
Max = 38.7 °C



109.0 °C

ocel po zahřátí



61 °C

11:01:32

22 °C

borové dřevo



Avg = 24.0 °C

Min = 23.4 °C

Max = 24.8 °C



Avg = 25.4 °C

Min = 24.6 °C

Max = 25.9 °C

rozehřátá ocel



45.8 °C